



Short Communication

SARS-CoV-2 was already spreading in France in late December 2019

A. Deslandes^a, V. Berti^a, Y. Tandjaoui-Lambotte^{b,c}, Chakib Alloui^a, E. Carbonnelle^{a,d}, J.R. Zahar^{a,d,*}, S. Brichler^a, Yves Cohen^{b,e}

^a Université Paris 13, Sorbonne Paris Cité, France, and Service de Microbiologie Clinique et Unité de Contrôle et de Prévention du Risque Infectieux, Groupe Hospitalier Paris Seine Saint-Denis, AP-HP, Bobigny, France

^b Réanimation polyvalente, Groupe Hospitalier Paris Seine Saint-Denis, AP-HP, Bobigny, France

^c INSERM U1272 Hypoxie et Poumon, Bobigny, France

^d IAME, UMR 1137, Université Paris 13, Sorbonne Paris Cité, France

^e INSERM, U942, F-75010, Paris, France

ARTICLE INFO

Article history:

Received 14 April 2020

Accepted 25 April 2020

Keywords:

COVID-19

Coronavirus disease 2019

SARS-CoV-2

Intensive care unit

France

ABSTRACT

The COVID-19 epidemic is believed to have started in late January 2020 in France. Here we report a case of a patient hospitalised in December 2019 in an intensive care unit in a hospital in the north of Paris for haemoptysis with no aetiological diagnosis. RT-PCR was performed retrospectively on the stored respiratory sample and confirmed the diagnosis of severe acute respiratory syndrome coronavirus 2 (SARS-CoV-2) infection. Based on this result, it appears that the COVID-19 epidemic started much earlier in France.

© 2020 Elsevier B.V. and International Society of Chemotherapy. All rights reserved.

1. Introduction

Following its onset in December 2019 in China, a novel coronavirus named severe acute respiratory syndrome coronavirus 2 (SARS-CoV-2), causing COVID-19 (coronavirus disease 2019), has spread widely in many countries [1]. The World Health Organization (WHO) declared COVID-19 a pandemic on 11 March 2020 [2]. France reported the first cases of SARS-CoV-2 infection on 24 January 2020 [3]. Both cases had a history of travel to Wuhan, China [4]. To the best of our knowledge, these two cases are believed to be the first confirmed cases in France. COVID-19 most commonly presents with influenza-like illness (ILI) [5]. While China was facing the COVID-19 outbreak, European countries were struggling with seasonal influenza [6]. Since clinical symptomatology between COVID-19 and ILIs is similar, we therefore decided to retrospectively look for SARS-CoV-2 in respiratory samples collected in the intensive care unit (ICU) of our hospital near Paris, France.

2. Methods

2.1. Selected records

The medical records of ICU patients admitted for ILI between 2 December 2019 and 16 January 2020 with a negative reverse transcription PCR (RT-PCR) performed at admission were retrospectively reviewed. Every respiratory sample collected in our hospital is frozen at $-80\text{ }^{\circ}\text{C}$ in a Thermo Scientific™ $-86\text{ }^{\circ}\text{C}$ freezer and is stored for 4 years in case of a need for further analysis. Samples taken from patients with both ILI symptoms (fever $>38.5\text{ }^{\circ}\text{C}$, cough, rhinitis, sore throat or myalgia) and pulmonary ground-glass opacity according to their medical record underwent SARS-CoV-2 RT-PCR. A description of sample selection is shown in Fig. 1.

2.2. Testing for COVID-19

SARS-CoV-2 RT-PCR was performed on 14 selected biobanks between 6–9 April 2020. RT-PCR was performed strictly according to the Charité protocol [7] targeting the E gene, encoding the envelope protein, pangenomic of SARS-CoV-1 and SARS-CoV-2, using a QuantStudio™ 7 Flex Real-Time PCR System (Thermo Fisher). A positive result (Fig. 2) was confirmed using a Gene finder® COVID19 Plus RealAmp Kit (IFMR-45) according to the manufac-

* Corresponding author. Present address: Unité de Contrôle et de Prévention du risque infectieux, GH Paris Seine Saint-Denis, AP-HP, Bobigny, France.

E-mail address: jrzahar@gmail.com (J.R. Zahar).

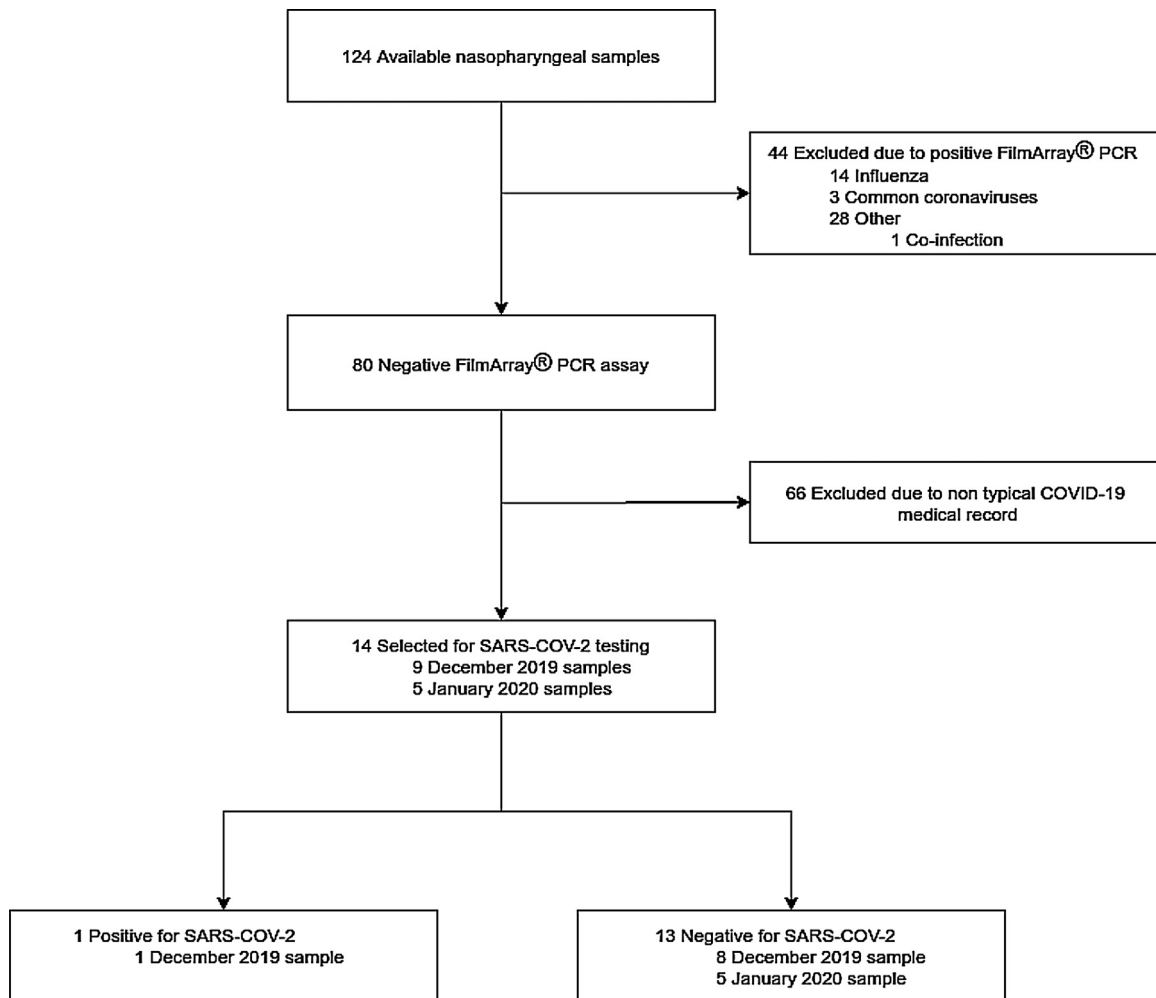


Fig. 1. Selection process for testing, COVID-19, coronavirus 2019; SARS-CoV-2, severe acute respiratory syndrome coronavirus 2.

turer's recommendations. This test targets three viral genes (RdRp, E and N encoding, respectively, the viral RNA-dependent RNA polymerase, envelope protein and nucleocapsid protein) as well as the cellular ribonuclease P gene in order to confirm the quality of the respiratory sample.

3. Results

During the study period, 14 (24%) of 58 patients admitted for ILI were included in the current analysis (Table 1). One sample taken from a 42-year-old unemployed male born in Algeria who had lived in France for many years was positive. His last foreign travel was to Algeria in August 2019. One of his children presented with ILI prior to the onset of his symptoms. His medical history included asthma and type II diabetes mellitus. He presented to the emergency ward on 27 December 2019 with haemoptysis, cough, chest pain, headache and fever, evolving for 4 days. Initial examination was unremarkable and chest computed tomography (CT) imaging revealed bilateral pulmonary ground-glass opacities in the inferior lobes (Fig. 3).

At admission, the patient had lymphopenia and elevated C-reactive protein (CRP) and fibrinogen, whilst the procalcitonin level was in the normal range. No pathogen was identified in sputum sample collected in the emergency ward. The patient was admitted to the ICU where he received antibiotic therapy and his clinical evolution was favourable until discharge on 29 December 2019.

4. Discussion

Here we report an observation of a SARS-CoV-2-infected patient 1 month before the first reported cases in France. On admission, the patient presented clinical signs and radiological patterns frequently observed previously in Chinese [9] and Italian [10] cohorts. Identifying the first infected patient is of great epidemiological interest as it changes dramatically our knowledge regarding SARS-CoV-2 and its spread in the country. Moreover, the absence of a link with China and the lack of recent foreign travel suggest that the disease was already spreading among the French population at the end of December 2019.

Further studies are required to evaluate the actual onset of SARS-CoV-2 in the French territory as well as the extent of SARS-CoV-2 contamination in the population during late 2019 and January 2020 and to explore the potential unnoticed deaths that could have happened at the time. As of 10 April 2020, COVID-19 is considered to be responsible for 86 334 cases and 12 210 deaths in France [11], but our findings suggest that these numbers could underestimate the actual burden of COVID-19. Two recent studies suggested that ~18–23% of patients infected with SARS-CoV-2 were asymptomatic [12] and that ~55% of infections were caused by unidentified infected persons [13]. The current results strongly support these two assumptions, suggesting that many asymptomatic patients were not diagnosed during January 2020 and contributed to the spread of this epidemic.

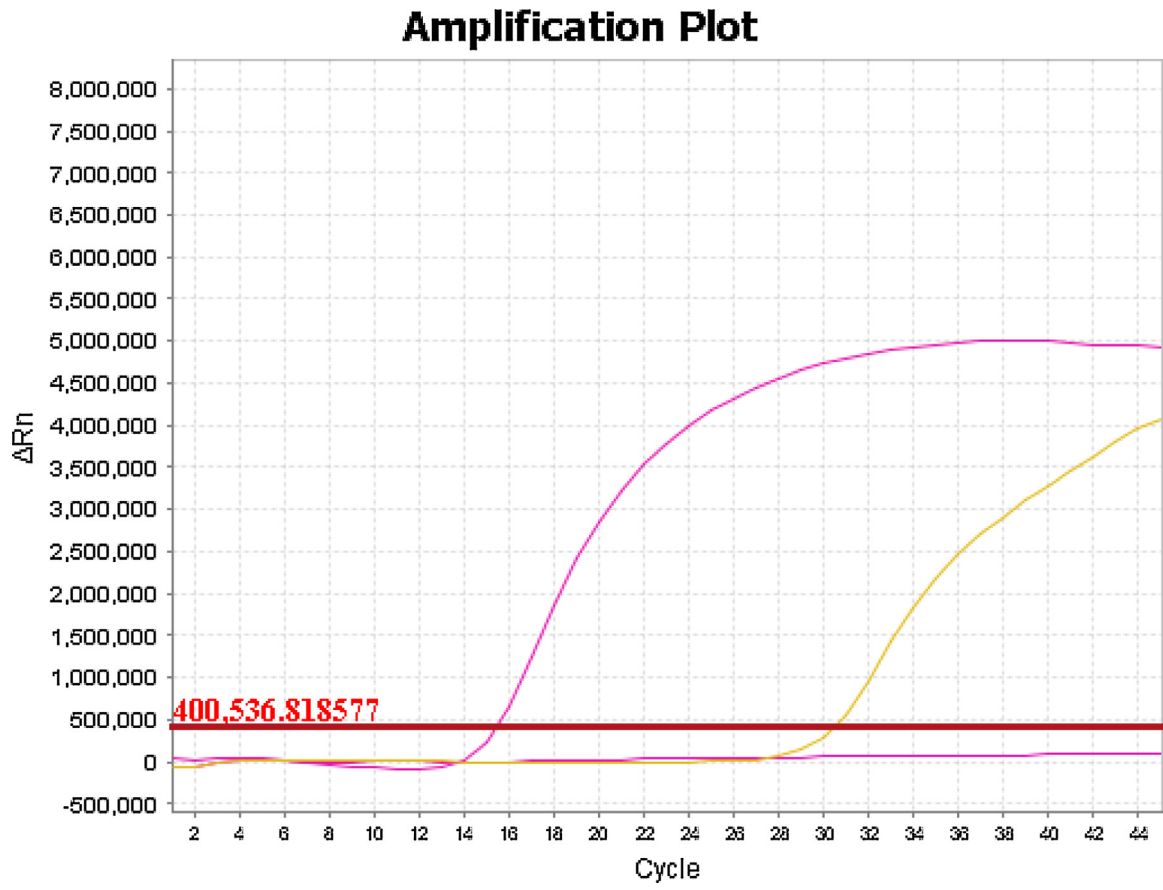


Fig. 2. Result of Charité protocol RT-PCR assay [11]: patient's curve in yellow; positive and negative test samples in purple.

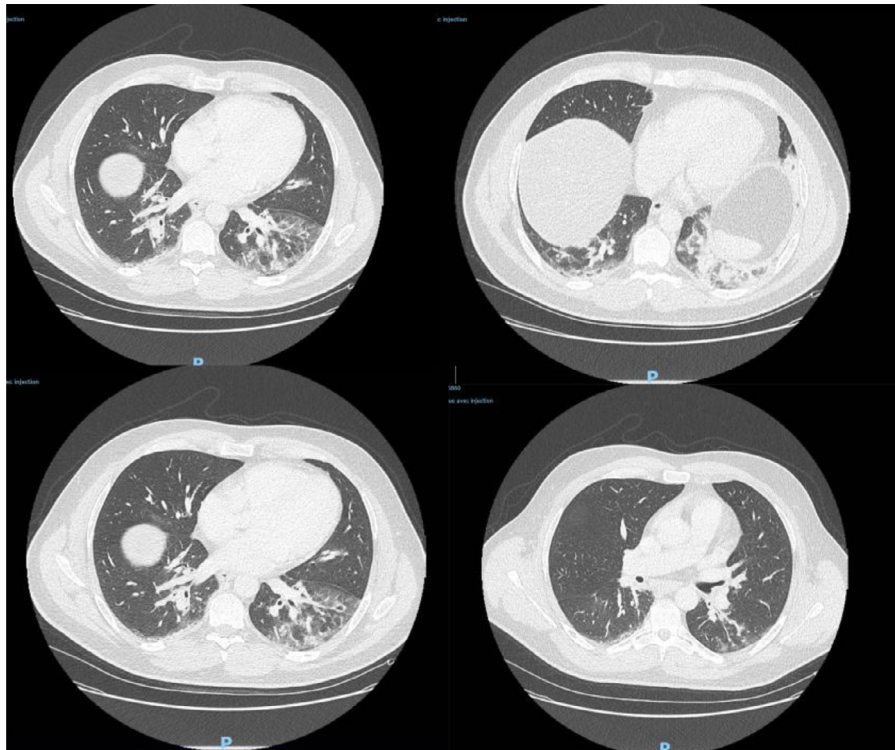


Fig. 3. Chest computed tomography (CT) images at baseline. Bilateral pulmonary ground-glass opacities appear in the inferior lobes.

Table 1
Clinical characteristics of the tested patients at baseline.

| Patient no. | Age (years) | Sex | Medical history | SARS-CoV-2 RT-PCR result | Days from symptom onset to nasopharyngeal swab | Symptoms at disease onset | BMI (kg/m ²) | TLC ($\times 10^9$ /L) | LDH (U/L) | hs-cTn (ng/L) | Fibrinogen (g/L) | CRP (mg/L) | PCT (μ g/L) | Bacteriology finding | Presence of ARDS ^a | Ventilation | Days spent in the ICU | Outcome |
|-------------|-------------|-----|--|--------------------------|--|---|--------------------------|-------------------------|-----------|---------------|------------------|------------|------------------|---|-------------------------------|-------------|-----------------------|------------|
| 1 | 63 | M | Stroke, MI | Neg. | 3 | Fatigue, weight loss, fever, cough, dyspnoea | 14.3 | 0.26 | 737 | 10 | 10.91 | 487 | 43.92 | Blood cultures: <i>Streptococcus pneumoniae</i> Not performed | Yes | NIV | 9 | Favourable |
| 2 | 67 | M | HBP, T2DM, hyperthyroidism, SAS, ILD, arrhythmia | Neg. | 7 | Dyspnoea | 33.0 | 1.18 | NA | NA | 4.38 | 6 | 0.04 | Not performed | Yes | NIV | 12 | Favourable |
| 3 | 55 | F | Steiner's myopathy | Neg. | 3 | Dyspnoea, fall, cough | 11.3 | 1.29 | NA | 59 | NA | NA | 0.22 | Bronchial aspiration: <i>Escherichia coli</i> , <i>Pseudomonas aeruginosa</i> Blood cultures: <i>Staphylococcus haemolyticus</i> | Yes | NIV | 4 | Death |
| 4 | 43 | F | None | Neg. | 2 | Dyspnoea | 21.2 | <0.1 | 189 | 9 | 4.01 | 148 | 0.8 | Blood cultures: <i>Staphylococcus haemolyticus</i> | Yes | NIV | 8 | Death |
| 5 | 42 | M | T2DM, asthma | Pos. | 5 | Haemoptysis, cough, headache, chest pain, fever | NA | 0.89 | 310 | 3 | 4.55 | 47 | 0.21 | Not performed | No | Spontaneous | 2 | Favourable |
| 6 | 77 | F | AML, osteoporosis | Neg. | 10 | Hypoxaemia, polypnoea, febrile aplasia | 22.1 | 1.03 | 740 | 11 | 5.43 | 240 | 0.55 | Not performed | No | NIV | 3 | Death |
| 7 | 53 | F | T2DM, HBP | Neg. | 3 | Diarrhoea, dyspnoea, agitation | 30.9 | 3.87 | 926 | NA | 3.04 | NA | 1.08 | Not performed | No | Spontaneous | 6 | Favourable |
| 8 | 74 | F | Hemiparesis | Neg. | 1 | Dyspnoea, impaired consciousness | 22.4 | 0.77 | 519 | 124 | 4.00 | NA | 0.77 | Urinary colonisation with <i>E. coli</i> | No | NIV | 7 | Favourable |
| 9 | 34 | M | Obesity | Neg. | 30 | Cough, fatigue, fever, dyspnoea | 36.9 | 3.52 | 821 | 394 | 6.88 | 3 | NA | Toxocariasis | No | NIV | 7 | Favourable |
| 10 | 37 | F | Uterine carcinoma | Neg. | 0 | Haemoptysis | 23.4 | 0.76 | NA | NA | NA | NA | NA | Not performed | No | Spontaneous | 1 | Favourable |
| 11 | 54 | M | HIV | Neg. | 4 | Dyspnoea, chest pain | 23.8 | 1.03 | 479 | 8 | 6.84 | 330 | 2.04 | Sepsis and pneumonia with <i>S. pneumoniae</i> | Yes | NIV | 2 | Favourable |
| 12 | 54 | M | Sarcoidosis, SAS, T2DM, HBP | Neg. | 13 | Dyspnoea, fever, cough, haemoptysis, diarrhoea | 27.9 | 0.69 | 615 | 68 | 5.62 | 173 | 0.64 | None | Yes | NIV | 4 | Favourable |
| 13 | 92 | F | Pulmonary embolism | Neg. | NA | Cough, fall | 17.6 | 0.63 | NA | 311 | 10.32 | 284 | 0.81 | Not performed | Yes | NIV | 5 | Death |
| 14 | 73 | F | HBP, atherosclerosis, ILD | Neg. | 1 | Cough | 21.4 | 1.56 | 1032 | 45 | 7.61 | 171 | 0.25 | Negative | Yes | NIV | 3 | Favourable |

SARS-CoV-2, severe acute respiratory syndrome coronavirus 2; BMI, body mass index; TLC, total lymphocyte count; LDH, lactate dehydrogenase; hs-cTn, high-sensitivity cardiac troponin I; CRP, C-reactive protein; PCT, procalcitonin; ARDS, acute respiratory distress syndrome; ICU, intensive care unit; MI, myocardial infarction; NIV, non-invasive ventilation; HBP, high blood pressure; T2DM, type 2 diabetes mellitus; SAS, sleep apnoea syndrome; ILD, interstitial lung disease; NA, not available; AML, acute myeloid leukaemia; HIV, human immunodeficiency virus.

^a According to the Berlin definition [8].

Furthermore, since these results change our understanding of the dynamics of the epidemic, it also means that several models used to predict the evolution and outcomes of SARS-CoV-2 propagation might be based on biased data and would need to be adjusted to the actual profile of the epidemic [14].

This study has several limitations. First, owing to the retrospective nature of the analyses, medical records were not exhaustive and some relevant information might have been missing. Second, we are not able to rule out false-negative results due to the sensitivity of RT-PCR [15] and a technique of storage that may possibly impair the quality of samples [16]. To avoid any false-positive result, we took all of the usual precautions and also confirmed the result by two different techniques and staff. Third, we restricted our analyses to only a few samples and chose to limit the selected records to ICU patients with compatible symptoms and CT findings, although most patients actually have mild symptoms. Fourth, we restricted our analyses to patients with a negative multiplex PCR at the time even though cross-contamination has been described in the literature [17]. Finally, we conducted a monocentric study in the Northern Paris area, which faced a particularly high burden in this epidemic [18]. These limitations could explain why we were only able to identify one person infected with SARS-CoV-2 in our population.

Declarations

Funding: None.

Competing Interests: None declared.

Ethical Approval: Not required.

References

- [1] Zhu N, Zhang D, Wang W, Li X, Yang B, Song J, et al. China Novel Coronavirus Investigating and Research Team. A novel coronavirus from patients with pneumonia in China, 2019. *N Engl J Med* 2020;382:727–33. doi:10.1056/NEJMoa2001017.
- [2] World Health Organization (WHO). *WHO Director-General's opening remarks at the media briefing on COVID-19—11 March 2020*. <https://www.who.int/dg/speeches/detail/who-director-general-8-opening-remarks-at-the-media-briefing-on-covid-19-11-march-2020> [accessed 30 April 2020].
- [3] Lescuré FX, Bouadma L, Nguyen D, Parisey M, Wicky PH, Behillil S, et al. Clinical and virological data of the first cases of COVID-19 in Europe: a case series. *Lancet Infect Dis* 2020 Mar 27 [Epub ahead of print]. doi:10.1016/S1473-3099(20)30200-0.
- [4] Bernard Stoecklin S, Rolland P, Silue Y, Mailles A, Campese C, Simondon A, et al. First cases of coronavirus disease 2019 (COVID-19) in France: surveillance, investigations and control measures. *January 2020*. *Euro Surveill* 2020;25. doi:10.2807/1560-7917.ES.2020.25.6.2000094.
- [5] Guan WJ, Ni ZY, Hu Y, Liang WH, Ou CQ, He JX, et al. Clinical characteristics of coronavirus disease 2019 in China. *N Engl J Med* 2020;382:1708–20. doi:10.1056/NEJMoa2002032.
- [6] European Centre for Disease Prevention and Control (ECDC). *Communicable disease threats report (CDTR), Week 14, 29 March–4 April 2020*. <https://www.ecdc.europa.eu/sites/default/files/documents/Communicable-disease-threats-report-4-apr-2020.pdf> [accessed 1 May 2020].
- [7] Corman VM, Landt O, Kaiser M, Molenkamp R, Meijer A, Chu DK, et al. Detection of 2019 novel coronavirus (2019-nCoV) by real-time RT-PCR. *Euro Surveill* 2020;25. doi:10.2807/1560-7917.ES.2020.25.3.2000045.
- [8] Ranieri VM, Rubenfeld GD, Thompson BT, Ferguson ND, Caldwell E, Fan E, et al., ARDS Definition Task Force Acute respiratory distress syndrome: the Berlin definition. *JAMA* 2012;307:2526–33. doi:10.1001/jama.2012.5669.
- [9] Shi H, Han X, Jiang N, Cao Y, Alwalid O, Gu J, et al. Radiological findings from 81 patients with COVID-19 pneumonia in Wuhan, China: a descriptive study. *Lancet Infect Dis* 2020;20:425–34. doi:10.1016/S1473-3099(20)30086-4.
- [10] Caruso D, Zerunian M, Polici M, Pucciarelli F, Polidori T, Rucci C, et al. Chest CT features of COVID-19 in Rome, Italy. *Radiology* 2020;201237. doi:10.1148/radiol.2020201237.
- [11] European Centre for Disease Prevention and Control (ECDC). *Situation update worldwide, as of 12 April 2020*. <https://www.ecdc.europa.eu/en/geographical-distribution-2019-ncov-cases> [accessed 12 April 2020].
- [12] Mizumoto K, Kagaya K, Zarebski A, Chowell G. Estimating the asymptomatic proportion of coronavirus disease 2019 (COVID-19) cases on board the Diamond Princess cruise ship, Yokohama, Japan, 2020. *Euro Surveill* 2020;25. doi:10.2807/1560-7917.ES.2020.25.10.2000180.
- [13] Tuite A, Ng V, Rees E, Fisman D. Estimation of COVID-19 outbreak size in Italy. *Lancet Infect Dis* 2020 Mar 19 [Epub ahead of print]. doi:10.1016/S1473-3099(20)30227-9.
- [14] Wynants L, Van Calster B, Bonten MMJ, Collins GS, Debray TPA, De Vos M, et al. Prediction models for diagnosis and prognosis of COVID-19 infection: systematic review and critical appraisal. *BMJ* 2020;369:m1328. doi:10.1136/bmj.m1328.
- [15] Wang W, Xu Y, Gao R, Lu R, Han K, Wu G, et al. Detection of SARS-CoV-2 in different types of clinical specimens. *JAMA* 2020 Mar 11 [Epub ahead of print]. doi:10.1001/jama.2020.3786.
- [16] Röder B, Frühwirth K, Vogl C, Wagner M, Rossmann P. Impact of long-term storage on stability of standard DNA for nucleic acid-based methods. *J Clin Microbiol* 2010;48:4260–2. doi:10.1128/JCM.01230-10.
- [17] Wu X, Cai Y, Huang X, Yu X, Zhao L, Wang F, et al. Co-infection with SARS-CoV-2 and influenza A virus in patient with pneumonia, China. *Emerg Infect Dis* 2020;26. doi:10.3201/eid2606.200299.
- [18] Géodes – Santé publique France. *Indicateurs: cartes, données et graphiques [Indicators: maps, data and graphs]*. <https://geodes.santepubliquefrance.fr/#view=map2&c=indicateur> [accessed 30 April 2020].